

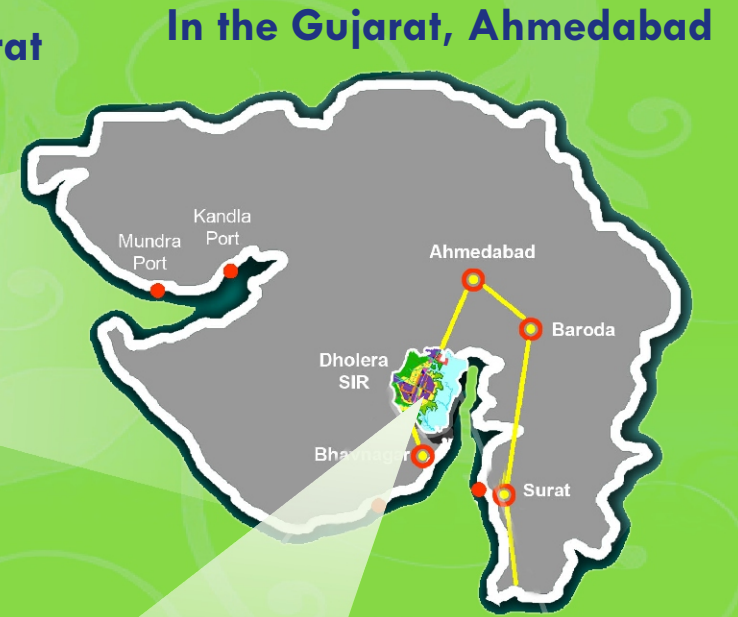
**A New Gujarat,  
Within Gujarat**

***Village : Sandhida, Zone : Industrial,  
TP : 3, Survey no.: 256, FP - 233/1,  
FP Area : 7559 sq. Yard, 6320 sq. Feet,  
48 Meters TP Road***

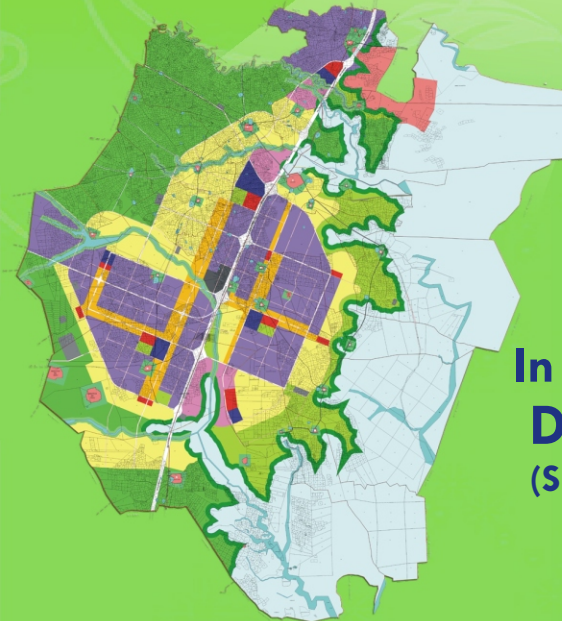
**Industrial Park (FP -231/1)**  
**Industrial Zone**  
**Near Dholera Expressway**



# Where is the Best Real Estate Investment Destination Today !!



In the World, India



In the Ahmedabad District;  
**Dholera SIR**  
(Special Investment Region)



# “Dholera will be better developed than Delhi”

Stressing the need for developing urban and rural areas simultaneously, India's **Prime Minister Narendra Modi** said that port city of Dholera will be developed better than Delhi and six times bigger than Delhi and six times bigger than China's Financial Capital Shanghai. He said that at the end of a panel discussion on 'rurbanisation', organized as a part of a series of programmes heralding the Vibrant Gujarat Global Investors Summit.



# D

DEVELOPMENT

# H

HIGH IN CLASS

# O

OPPORTUNITY

# L

LIVE-WORK-PLAY

# E

EFFICIENT INFRA.

# R

REVOLUTIONARY

# A

A NEW ERA

## Futuristic Vision for Development

### Futuristic Vision for Development Blueprint for Infrastructure in Gujarat BIG 2020

Gujarat has envisioned a future and documented a vision BIG 2020. The new vision comprises investments of approximately USD 225 billion in various sectors like :

- Dholera SIR
- Other SIRs, Industrial Nodes, Logistics Parks & SEZs within the Delhi Mumbai Industrial Corridor Industrial Parks
- Roads, Ports, Railway, Airport
- Urban Infrastructure, Water Supply
- Tourism



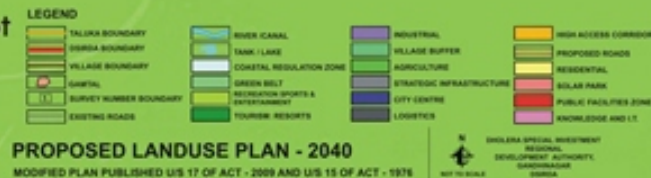
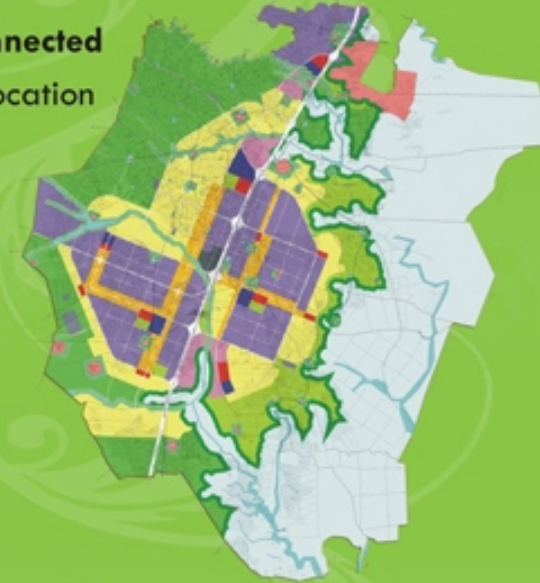
**Dholera SIR Intelligent, Efficient, Connected and Robust Infrastructure**

## Landmark Development Dholera Special Investment Region (DSIR)

Dholera SIR is Developed with a vision to create world class centre of industrial excellence and economic activity. This is one of the first SIR in the state after the SIR Act was passed in Gujarat

### Dholera SIR: Ideally located, Widely Connected

- Total Area 903 Sq. kms: a green field location
- Developable area : 547 sq. kms.
- Economic activity area : 377 sq. kms
- High Access Corridor : City Center, Industrial, Logistic, knowledge and IT, recreation & Sports, Entertainment
- World-class infrastructure & connectivity
- Central spine express way and Metro Rail to link the SIR with Mega Cities
- Airport and Sea port in the Vicinity
- Proximity to mega cities : Ahmedabad, Bhavnagar, Rajkot & Vadodara



### Opportunities in Dholera SIR

To build the Industrial Parks, Townships, Knowledge Cities

To Develop basis Infrastructure : Road, Rail, Hospital, Water, Sanitation, Tourism & Hospitality

Set up a Metro Rail system and an International Airport

Potential for development as a multi-model transportation hub due to proximity to most of the north Indian States

## A new Gujarat within Gujarat



"Gujarat has had a strong industrial base. In recent years, it has made an impressive progress from industrial clusters and estates to Special Economic Zones. Now, it graduates to Special Investment Region. You can foresee. It will be a New Gujarat within Gujarat"

**Shri Narendra Modi**  
hon'ble Prime Minister of india

# Bigger than the Biggest Development in The World

## Dholera International Airport (Cargo cum Passenger)

- New International Airport on the Northern tip, 1 kms away of SIR
- 9200hectars Government land reserved by the state Govt of Gujarat
- DPR under preparation by Airport Authority of India
- Site suitability established by Airport Authority of India
- Well connected with proposed six lane express way & Metro Rail upto Ahmedabad and Gandhinagar
- SPV has been formed by GoG
- Cargo as well as Passenger Airport facility will be available



### Road Connectivity



### Rail Connectivity



### Sea Connectivity

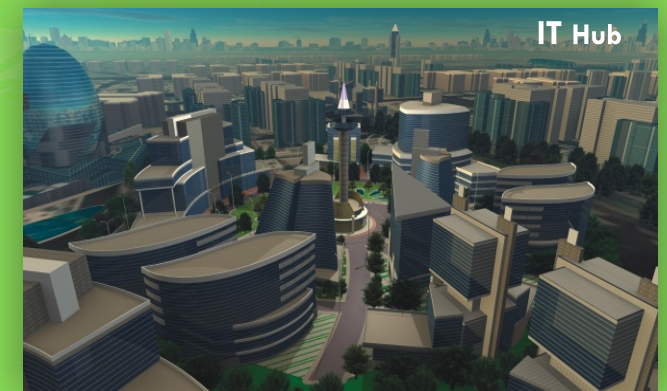
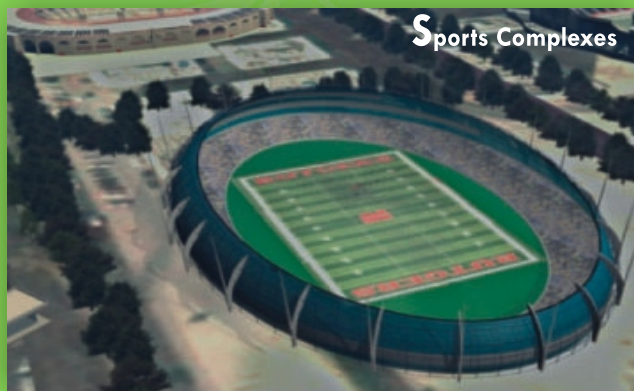
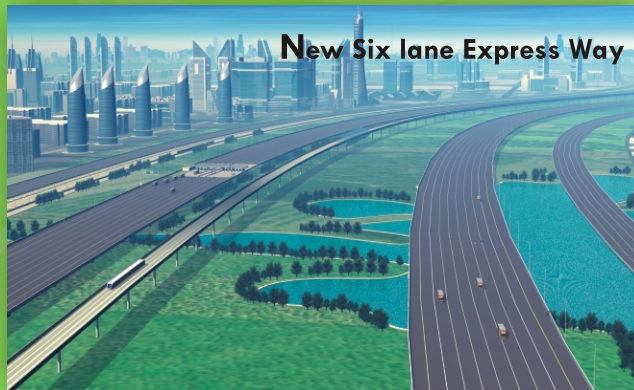
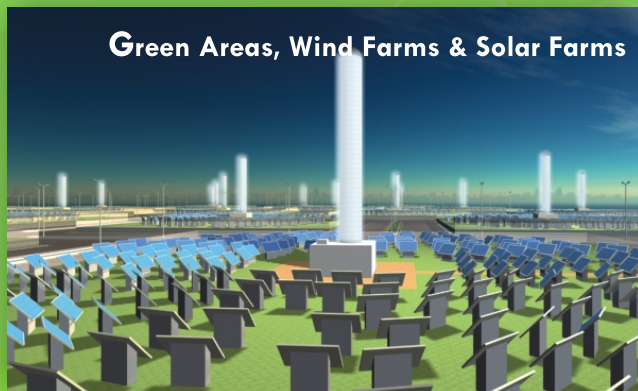
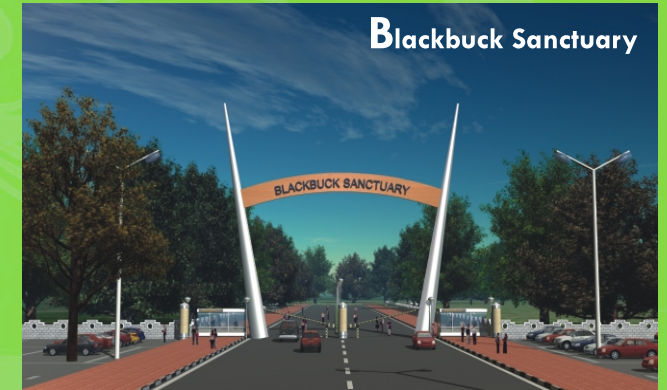


### Air Connectivity



<b>D</b>	<b>H</b>	<b>O</b>	<b>L</b>	<b>E</b>	<b>R</b>	<b>A</b>
DEVELOPMENT	HIGH IN CLASS	OPPORTUNITY	LIVE-WORK-PLAY	EFFICIENT INFRA.	REVOLUTIONARY	A NEW ERA

# Mega Projects of Dholera Special Investment Region



# AN OVERVIEW OF THE DEVELOPMENT PROCESS AND PROJECTS IN D-SIR

**TOWN PLANNING SCHEMES** : As a part of micro level planning the entire DSIR urban development area is divided into six Town Planning Schemes, of which Town Planning Scheme 1 (TP1-51 sq.km) and Town Planning Scheme 2 (TP2-102 sq km) covering total area of about 150 sq km, are prioritised.

**PROSPECTIVE PROJECTS** : Various Project to be taken up in Dholera SIR in the first phase are listed below. (Value amounting to approx. INR 28000 Crores.)

## Roads & Bridges



Envisaged 521 kms of roads comprising main carriageway, service roads, foot path, cycle track, plantation strip, street lighting and Bridges of area approx 60000 sqm in TP1, TP2E & TP2W.

## Raw Water & Portable Water



The raw water conveyance arrangements from Periyar together with intake structure, pumping stations, raw transmission line, water treatment plant, potable water transmission main, MBRs & distribution network.

## Power Transmission and Distribution



Effective power infrastructure will contribute to the economic prosperity of DSIR. This will be achieved through the development of sustainable state of the art infrastructure for power generation, transmission and distribution

- Source power for TP1 & TP2 (Phase 1 of the DSIR development) locally from Gujarat Grid

- Plan for thermal and/or gas power plant for Phase 2 expected to create a separate Special Purpose Vehicle (SPV) for generation
- 400 kV transmission lines are expected to run around the periphery of DSIR
- Power infrastructure will be built around energy saving smart technologies Smart metering for consumers (electricity and gas).
- Form SPV with a local distribution company.

## Information and Communication Technology (ICT)



Information and communication technology (ICT) covers the development of comprehensive voice, data, video and IT infrastructure, aided with present day applications for education, local governance, medical support, transportation, data mining, efficient buildings, building/home security, etc.

The objective of the ICT project is to build a smart, attractive modern city of Dholera that will provide attraction to the economic development of the region. ICT infrastructure is envisaged to boost sustainable economic development and a high quality of life for the residents, with efficient management of the city's infrastructure. The smart city concept supported by ICT will bring high efficiency and active citizen participation.

**Solid Waste Management** : Estimated municipal waste amounting to 500 tpd to convey and segregate by an automatic segregation plant. Waste-to-Energy treatment would be considered and the ash generated would be disposed only in the landfill.

## Industrial Effluent collection system



Formation of industrial effluent collection system network, effluent treatment plants in TP1 & TP2E and effluent out fall.

## Storm Water collection system



Formation of collection system of storm water run off within TP areas through RCC pipeline network & disposal.

## Administrative and Business Centre of Dholera (ABCD)



ABCD is proposed as abutting the expressway within TP2W, to serve as administrative functions of the city. DSIRDA building envisaged with a LEED GOLD rated building.

## River Training / Bunding



DSIR is located in the flood plain of three rivers, from Sukhbhadar River in the north to the Lilka and Utavli at the south. River training and bunding necessitated along the river course for 200 km in length for flood protection.

## Waste Water Treatment & Recycle



Wastewater from AMC Vasnato TP1 tertiary treatment plant and to store in MBRs for industrial & agriculture purposes..

## Domestic Sewage Collection System



Formation of domestic sewage collection system network, sewage treatment plant, distribution network for conveyance of treated water for industrial & agriculture use.

## Linked Projects

### Central Spine Road (Sh6)

The Gujarat State Road Development Corporation Limited (GSRDC) is developing an access controlled expressway

between Ahmedabad & DSIR to serve as a central spine road for DSIR.



### MRTS (Metro Train)

Mass Rapid Transit System (MRTS) between Ahmedabad and DSIR is part of the plan to develop self-sustainable rail based transportation system in order to provide connectivity both within DSIR and between DSIR and Ahmedabad.



### Airport

Greenfield international airport is proposed on northern side of DSIR located at approx. 1 Km from DSIR boundary.



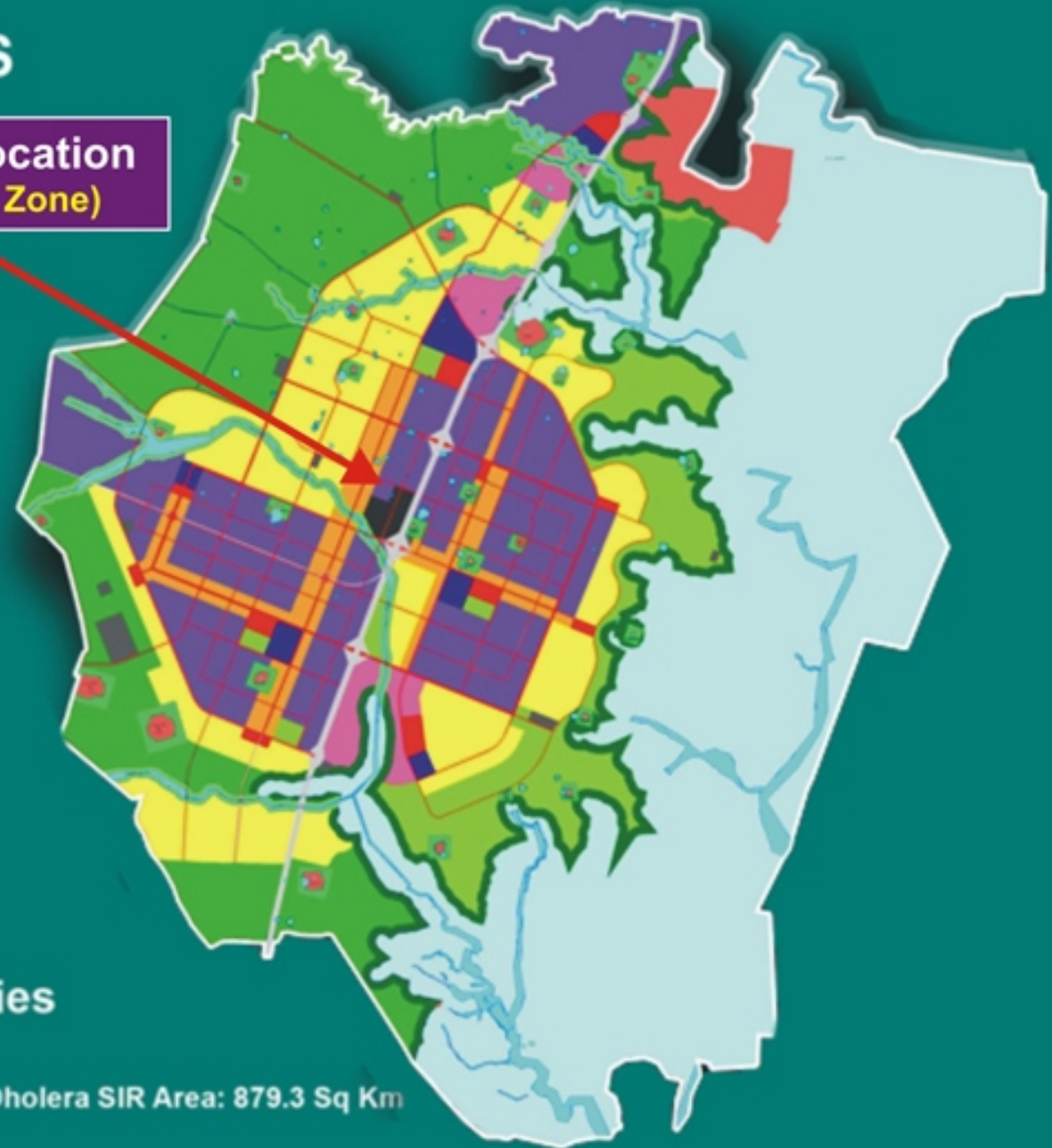


# India's First Planned SMART CITY

## DHOLERA SIR KEY INDICATORS

- Residential
- High Access Corridor
- City Centre
- Industrial
- Logistics
- Knowledge and IT
- Recreation and sports
- Entertainment
- Roads
- Strategic Infrastructures
- Tourism - Resorts (CRZ III)
- Greenspace
- Village Buffer
- Existing Village Settlements
- Agriculture
- Public Facility Zone
- Rivers, Canals and other Waterbodies
- Solar Energy Park
- Land under CRZI

Project Location  
(Industrial Zone)



Dholera SIR Area: 879.3 Sq Km

# MEGA PROJECTS & THAIR LOCATION

## Multimodal Transport Hub

Hub for MRTS, LTR, BRT,  
Regional bus rail,  
para transport, cycle and  
pedestrian Integration

## Bhimnath Dholera Freight Line connecting Dholera to DFC

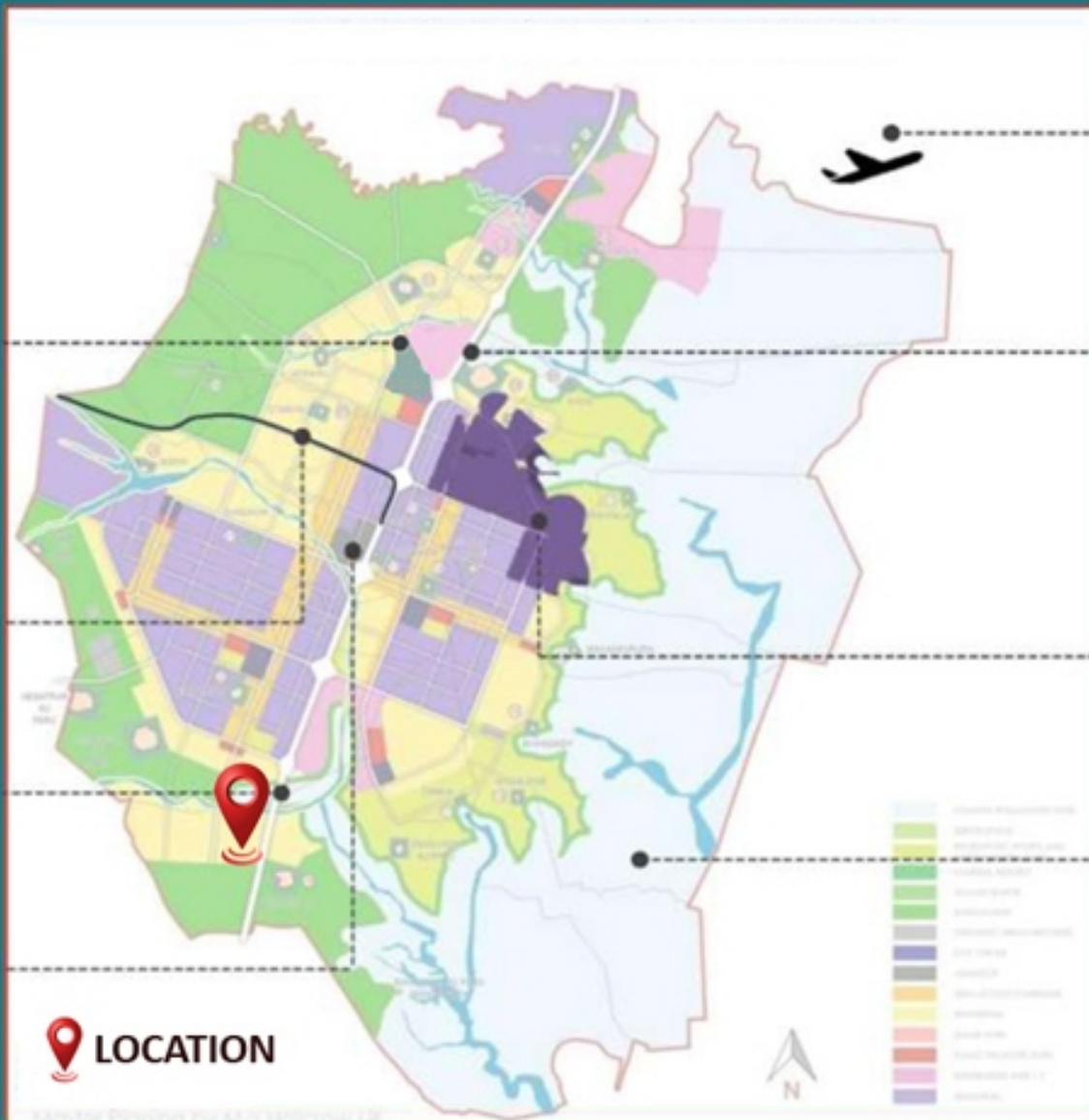
Dedicated freight line  
connecting Dholera to DFC

## MRTS within the ROW

Total 7 stops-  
Ahmedabad to Dholera;  
Travel time 60 minutes

## Logistic Park

 LOCATION



## Dholera International Airport

1428ha 2 runways  
(2900m & 4000m)

## Ahmedabad –Dholera

### 6 Lane Expressway

Access control  
Travel time 75 minutes

## Activation Area (22.54 sq km)

Services at plot level Green  
parks within 400/800 m

## Solar Park Development

(in CRZ- IB) 500 Mw

| 1000 ha land

**Residential Zone**



**Industrial Zone**



**Activation Area**



**High Access Corridor**

Village : Sandhida, Zone : Industrial,  
TP : 3, Survey no.: 256, FP - 233/1,  
FP Area : 7559 sq. Yard, 6320 sq. Meters,  
48 Meters TP Road

**Project Location  
(Industrial Zone)**

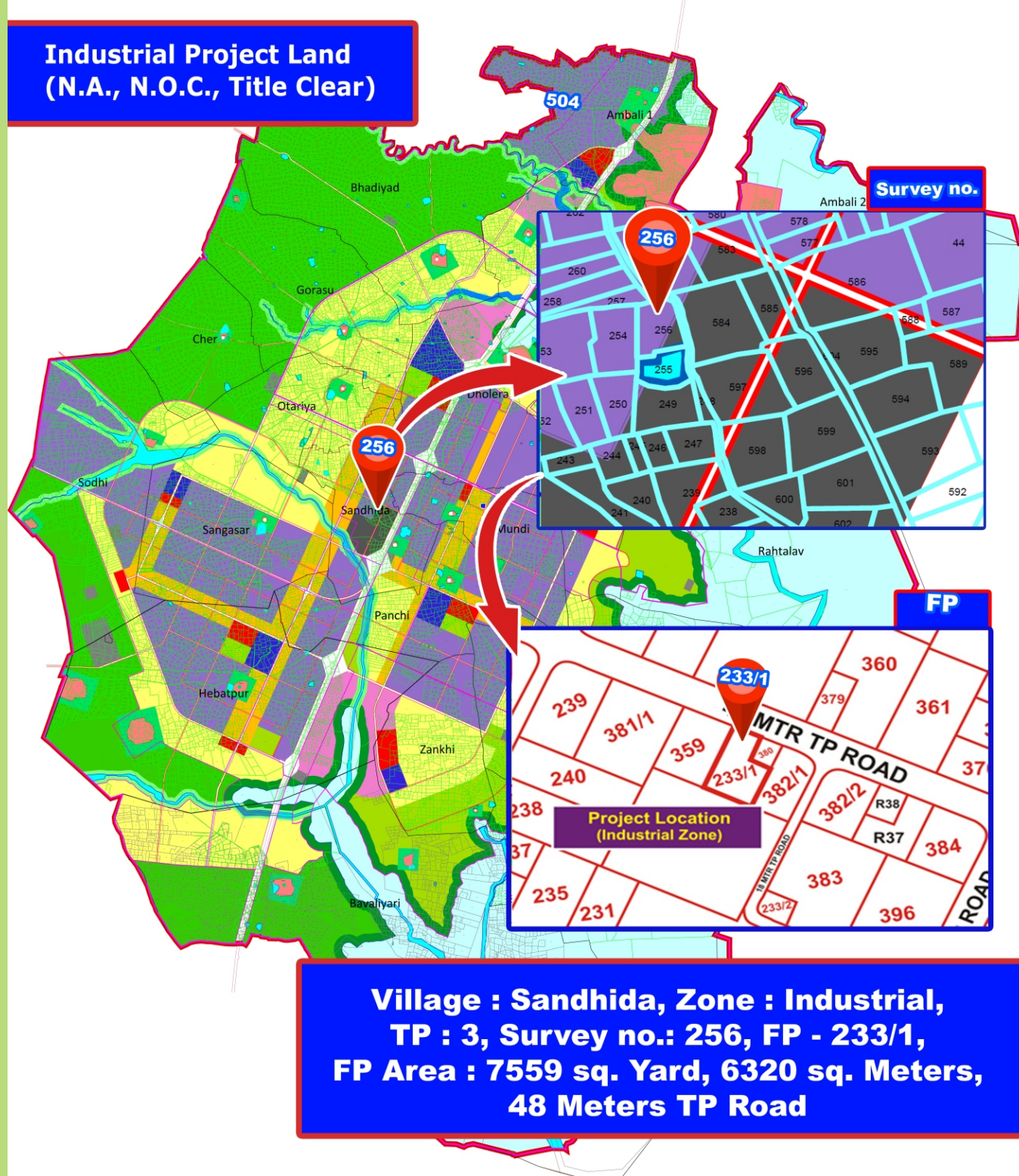
**Logistic Zone**



**Ahmedabad to Dholera Express highway**



**Industrial Project Land  
(N.A., N.O.C., Title Clear)**





**Project Location  
(Industrial Zone)**

**250 MTR Ahmedabad to Dholera Express Highway**





**Education Centre**  
**5 min**



**Public Facility Zone**  
**5 min**



**Lithium-ion Steel Plant**  
**5 min**



**Industrial Zone**  
**5 min**



**Lithium-ion Battery Plant**  
**5 min**



**Industrial Park**  
**LOCATION ADVANTAGE**



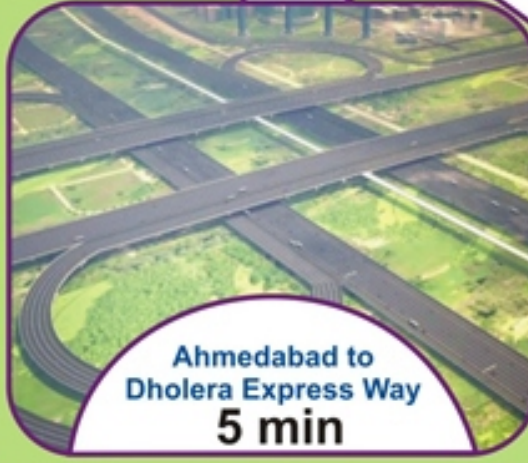
**IT & Knowledge**  
**5 min**



**ABCD Building**  
**5 min**



**Green Field International Airport**  
**15 min**



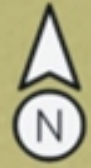
**Ahmedabad to Dholera Express Way**  
**5 min**



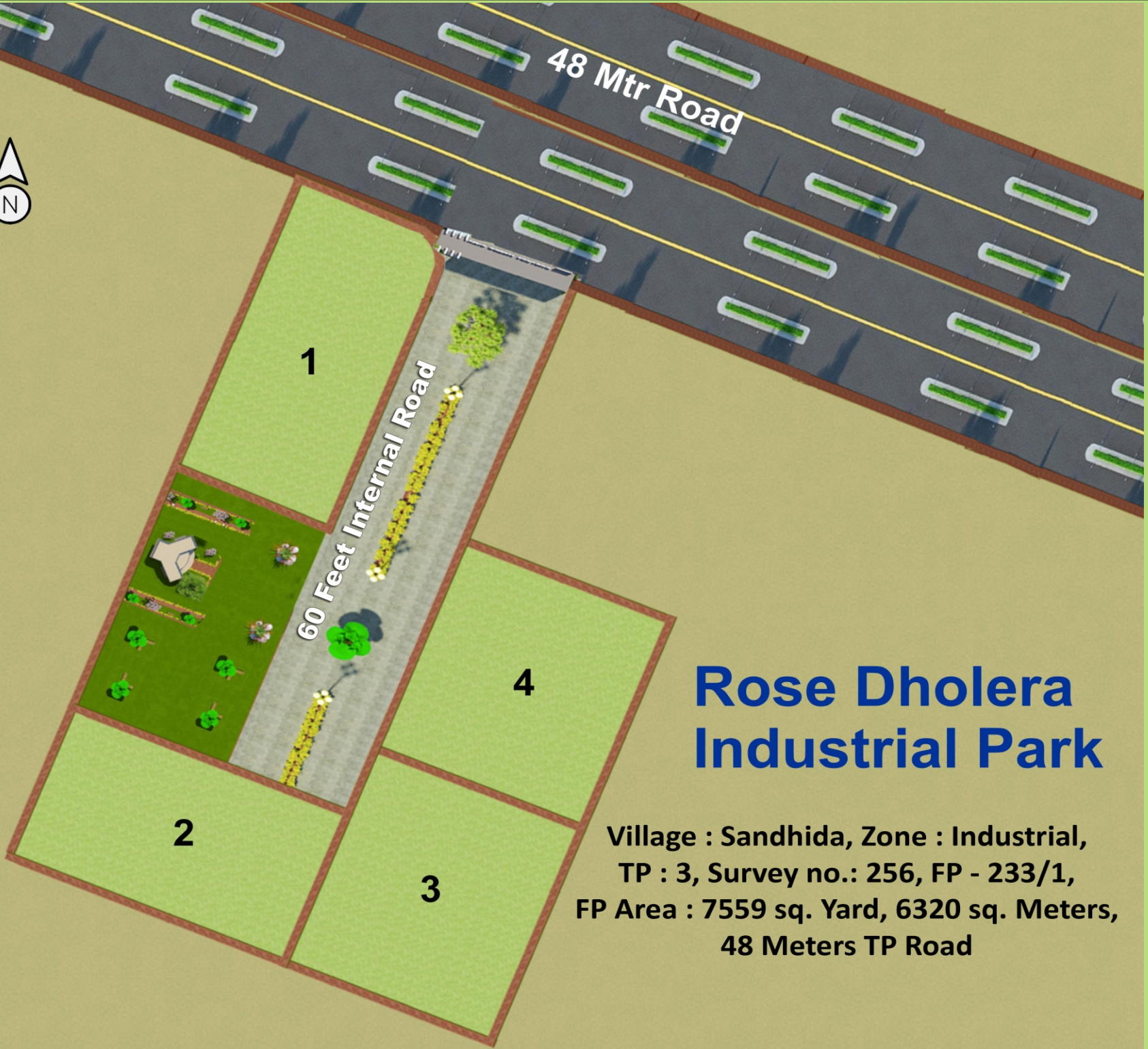
**Metro Rail Station**  
**5 min**

Village : Sandhida, Zone : Industrial,  
TP : 3, Survey no.: 256, FP - 233/1,  
FP Area : 7559 sq. Yard, 6320 sq. Meters,  
48 Meters TP Road

**Rose  
Dholera  
Industrial Park**







48 Mtr Road

60 Feet Internal Road

1

4

2

3

# Rose Dholera Industrial Park

Village : Sandhida, Zone : Industrial,  
TP : 3, Survey no.: 256, FP - 233/1,  
FP Area : 7559 sq. Yard, 6320 sq. Meters,  
48 Meters TP Road

## Industrial Park Plot Area

Plot No.	Carpet Area sq. yard	Super Area sq. yard	Total Area sq. yard	Carpet Area sq. Feet	Super Area sq. Feet	Total Area sq. feet
1	1196.81	690.76	1887.57	10771.32	6216.83	16988.15
2	1196.49	690.57	1887.06	10768.41	6215.15	16983.56
3	1199.47	692.29	1891.76	10795.22	6230.62	17025.84
4	1199.83	692.50	1892.33	10798.44	6232.48	17030.93
<b>Total</b>	<b>4792.60 (Sq. yard)</b>	<b>2766.12 (Sq. yard)</b>	<b>7558.72 (Sq. yard)</b>	<b>43133.39 (Sq. Feet)</b>	<b>24895.09 (Sq. Feet)</b>	<b>68028.48 (Sq. Feet)</b>

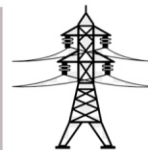
# TRUNK INFRASTRUCTURE



Road Cycle Tracks  
Footpaths Trees  
& plants



Water Management  
Smart meters SCADA



24x7 Power  
Smart meters SCADA



ICT enabled infrastructure  
City WiFi Integrated city  
Management



100% domestic  
waste collection  
100% industrial  
effluent collection



100% recycle and  
reuse of waste water



100% rainwater collection  
Open storm canal with  
recreational spaces



100% waste collection  
Maximum recycling and  
reuse Bio-methaneation,  
Incinerator Waste to  
energy

- Road design based on IRC
- Dig-Free Development
- LED street lights
- Roads W – 18 tp 70
- m->4 & 6 lane roads

Central Spine 250 mtr wide

Metro Rail Transit System

Light Rail Transit System

Dedicated Cycle track

Shaded (Green) Pedestrian  
Pathways

Traffic Management

Emergency Management

Safe City – Security &  
Surveillance

Real Time information

## INDUSTRIAL ZONE PERMITTED USES



**Defence & Aero Industry**



**Heavy Engineering**



**Auto & Auto Ancillaries**



**Solar Industry**



**Pharma & Bio Tech**



**Electronics**



**IT & ITES**



**Agro & Food Processing**

## 10.6. Industrial Zone

### 10.6.1. Intent

The intent in establishing an Industrial zone is:

1. To create a conducive environment for development industries with priority for the following sectors:
  - Automobile and auto ancillary
  - Hi-tech and electronics
  - General manufacturing
  - Heavy engineering
  - Metals and metallurgical products
  - Agro/food processing
  - Pharma and Biotech
2. To provide for retail and convenience uses supporting industrial establishments
3. To minimize the nuisance caused by industrial activities to adjacent non-industrial uses

### 10.6.2. Use Premises Permitted

- A. Industrial establishments in the orange and green categories as listed by the Ministry of Environment and Forests, Government of India will be permitted. Special approval will be required for industries belonging to the red category, or for industries which are not listed in any of the categories, by the competent committee within the DSIRDA.
- B. The following use premises will be permitted
  - Light and service industry / workshop
  - Petrol/CNG/LPG station with service station
  - Truck terminal with supporting amenities
  - Warehouse / Godown and storage facility
  - Fire Station
  - Restaurants/Foodcourt/ Canteen
  - Industrial convenience centre
  - Retail establishments supporting industrial zone
  - Solid waste segregation facility
  - Bank

### 10.6.3. Special Regulations for Industrial Development

In case of industrial plots adjacent to non-industrial uses, buffer as indicated in Table 10.5 shall be maintained on all common edges of the plot adjacent to the non-industrial zone. This buffer shall be planted with trees of minimum 6" calliper at the rate of 1 tree per 6sqm of area within the buffer. This buffer shall supersede the minimum set-back requirements for all edges of the plot adjacent to non-industrial uses.

# Draft General Development Control Regulations (DGDCR)

---

**Table 10-5:** Buffer Requirements for Industrial Plots

INDUSTRIAL CATEGORY*	MINIMUM BUFFER
Green Industry	10m
Orange Industry	15m
Red Industry	20m

\* Note: Refer to Appendix A for list of industries in Green, Orange and Red Categories.

## 10.6.4. Development Control

Table 10.6 provides development control regulations for development density (FAR), minimum requirements for open space, setbacks and permitted uses. These regulations are applicable for plots measuring 3ha or smaller. For plots larger than 3ha, additional requirements as per the Subdivision Guidelines (Chapter 11) shall apply. Minimum road width shall be 18m.

## 10.6.5. General Development Requirements

In addition to the above given development control regulations, all developments shall adhere to the common development requirements (Chapter 9) which cover the following elements:

- Sustainability
- Parking (refer table 9.3)
- Minimum Plot sizes (refer table 9.1)
- Plantation and maintenance of trees
- Drainage and flood prevention
- Seismic design
- Compound walls and gates
- General building requirements

## Draft General Development Control Regulations (DGDCR)

**Table 10-6:** Development Control Regulations for Industrial Areas

SR NO	MINIMUM ROAD ROW (METRES)	MIN. PLOT SIZE	MAXIMUM FAR	MAXIMUM GROUND COVERAGE AS PERCENT OF PLOT AREA	MAXIMUM BUILDING HEIGHT*	MINIMUM SETBACKS (FRONT-REAR-BOTH SIDES)	PERMITTED USE PREMISES	CONDITIONAL USE SUBJECT TO SPECIAL PERMIT FROM DSIRDA
<b>INDUSTRIAL</b>								
1	Below 30m		1.2	50%	25m	8m-8m-6m-6m	All industrial establishments Industrial sheds, utility buildings, industrial plants; Light industry; Service workshop; Café/Restaurant/Canteen; Bank; Warehouse/Godown/Storage Facility; Dormitories	DSIRDA can grant special permission in height, FAR, Ground Coverage for Special Buildings (Star Hotels, Hospitals etc.) which have special privileges (under various Government Policies issued time to time) (in reference to Township, Special Regulations for Hospitals, Special Regulations for Hotels)

\* Height of the building must comply to the prevalent Fire Safety Norms, with permissions from DSIRDA, Chief Fire Officer & Fire Advisor

# Land Allotment Completed At Dholera SIR

 <p><b>126 Acres</b> 10 GwH Li-ion Battery Manufacturing Plant</p>	 <p><b>100 Acres</b> 2 GW Solar Module Manufacturing Plant</p>	 <p><b>6 Acres</b> Power Distribution Network in Dholera SIR</p>	 <p><b>90 Acres</b> Aluminum Foil &amp; Flexible Packaging</p>		
 <p><b>3 Acres</b> Petrol Stations &amp; EV Charging Station</p>	 <p><b>1,320 Acre</b> World's largest renewable energy park</p>	 <p><b>700 MW solar</b> A subsidiary of O2 Power</p>	 <p><b>15 Acres</b> Beverage Company</p>		
 <p><b>100 Acres</b> 5 GW Solar Cell &amp; Module Manufacturing Plant</p>	 <p><b>30 Acres</b> Wire, Cables &amp; Accessories</p>	 <p><b>150 Acres</b> Solar Wafer Solar Cell &amp; Module</p>	 <p><b>400 + 300 Acres</b> LED FAB Semiconductor Facility Under the MeITY PLI</p>		
<p><b>Reliance + Google (Jointly)</b> Investment 3300 Cr Smartphone Manufacturing</p>	<p><b>Tsingshan Industry</b> Investment 21400 Stainless steel and EV batteries</p>	<p><b>Manikaran Power Ltd</b> Set-up India's First Power Invests Rs 1,000 Cr. To Lithium Refinery</p>	<p><b>AAI (Airport Authority of India)</b> (Varaha Infrastructure pvt.ltd) Airport Development first phase</p>	<p><b>CRR(C Chinese Rail infra. Company)</b> Investment 400 Cr Chinese metro rolling stock manufacturer</p>	<p><b>Cerectra Group (Special Education Region)</b> MoU signed with GoG</p>
<p><b>Aero India Show</b> Aerospace &amp; Defence Park</p>	<p><b>MSME Defence Expo</b> Manufacturing</p>				



# News About Dholera SIR



## CM Invites Over 1,500 Industrialists, Investors 7th Oct 2023 | Source by <https://ahmedabadmirror.com/>

Chief Minister Bhupendra Patel on Friday invited over 1,500 prominent industrialists and investors during the Vibrant Gujarat Global Summit (VGGS) 2024 curtain-raising event held in New Delhi. The 10th VGGS will be held in January 2024.....



## Gujarat's world-class infrastructure to lead the vision of 'Viksit Bharat' 7th Oct 2023 | Source by

<https://timesofindia.indiatimes.com/>

The foundation of a country's progress and prosperity lies in its ability to build and maintain robust infrastructure. Well-organized and efficient infrastructure facilities foster economic and social development and propel the state and the country to new heights.....



## 'Fabbing' India into a superpower 29th Sept 2023 | Source by <https://www.thestar.com.my/>

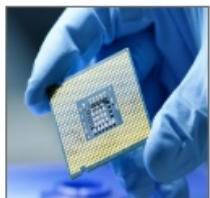
IN his office in New Delhi, Ashwini Vaishnav, the Indian minister of electronics and information technology, keeps a 30cm disc of silicon semiconductor on the wall, gleaming like a platinum record beside a portrait of Prime Minister Narendra Modi.....



## Modi wants to make India a chipmaking superpower. Can he succeed? 17th Sept 2023 | Source by

<https://www.japanimes.co.jp/>

n his office in New Delhi, Ashwini Vaishnav, the Indian minister of electronics and information technology, keeps a 12-inch disc of silicon semiconductor on the wall, gleaming like a platinum record beside a portrait of Prime Minister Narendra Modi. Its circuits, measured in nanometers and invisible .....



## India's semicon target a giant scale of ambition 17th Sept 2023 | Source by <https://www.bizzbuzz.news/>

Prime Minister Narendra Modi aims to propel India into the top tier of advanced semiconductor technology manufacturing - a "giant scale of ambition" to seize on the world's desire to reduce reliance on China, says a New York Times report.....